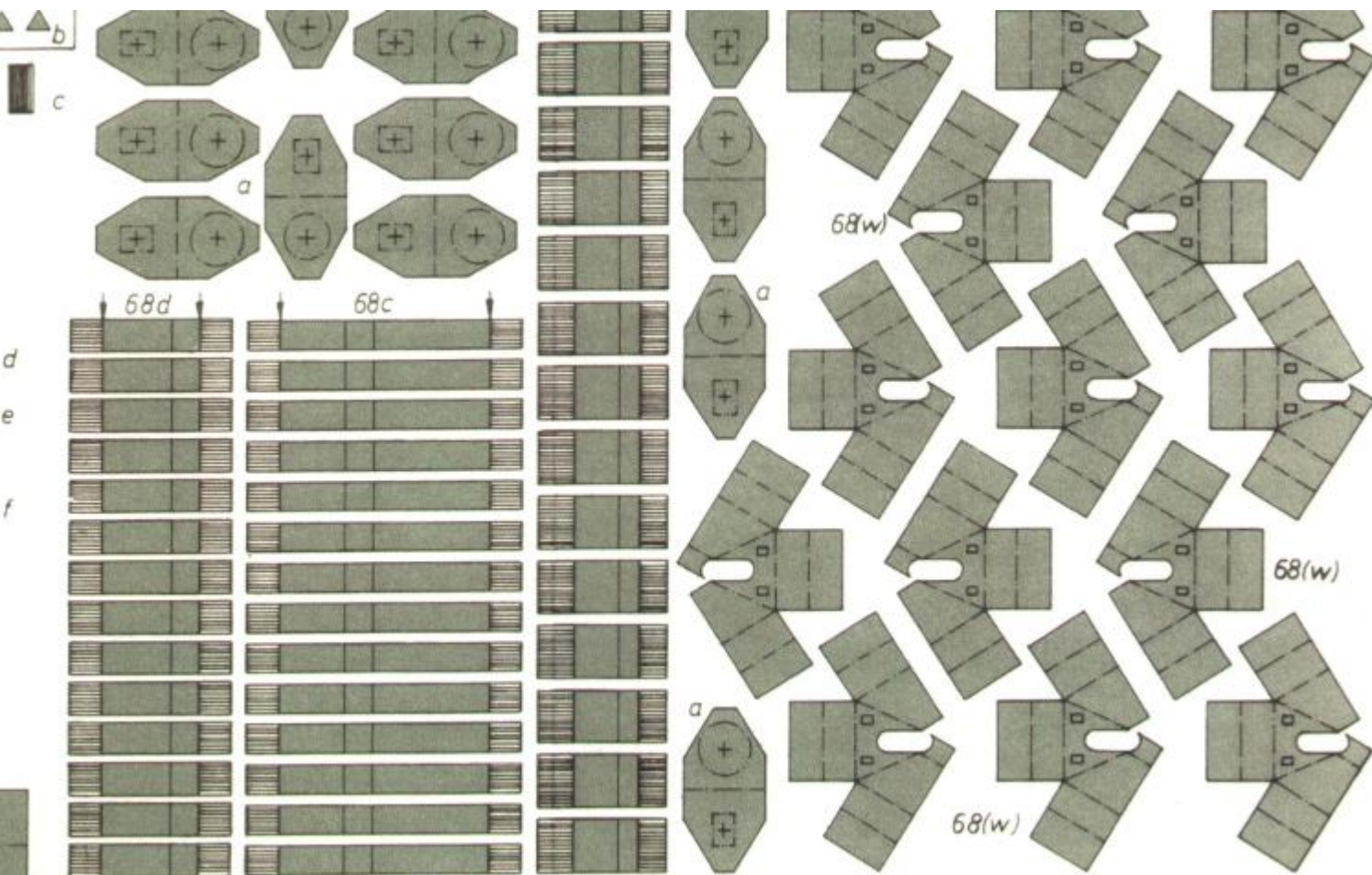


WILHELM



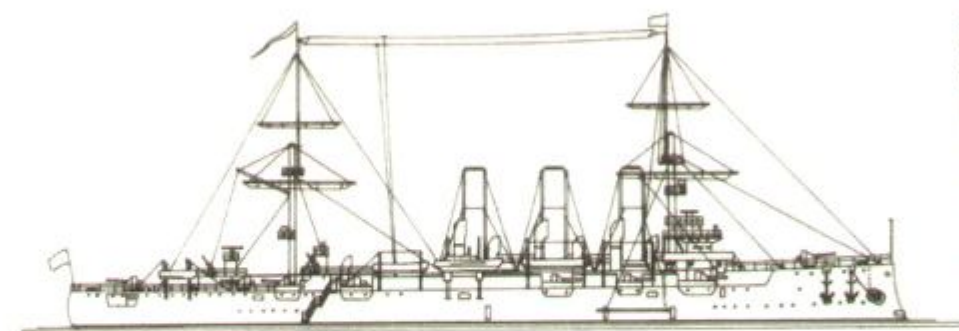
Mö

Printed in Germany



WILHELMSHAVENER MODELLBAUBOGEN

4 Bogen mit Bauanleitung



AURORA

Russischer Panzerkreuzer

Maßstab des Modells: 1 : 250

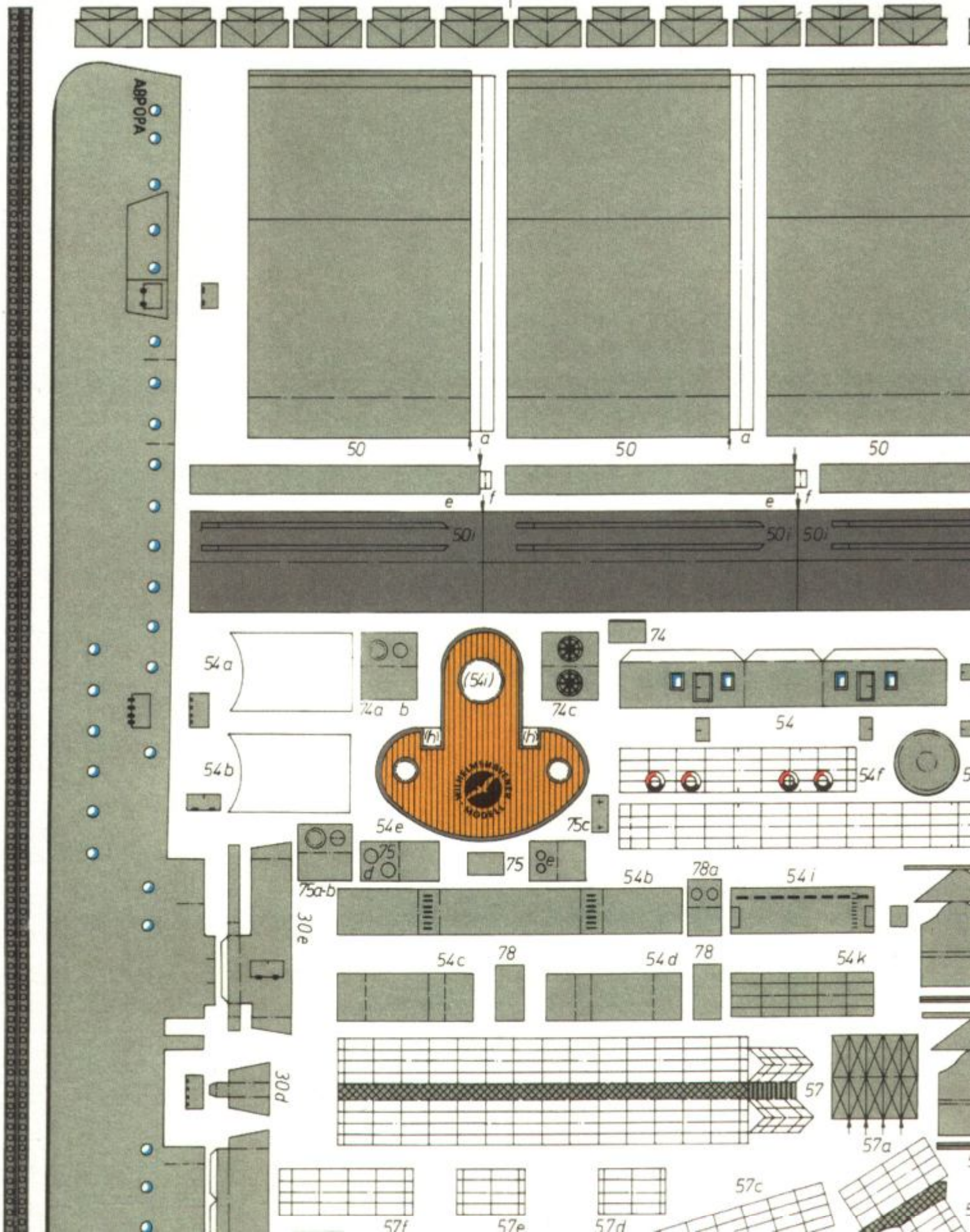
Möwe-Verlag Wilhelmshaven

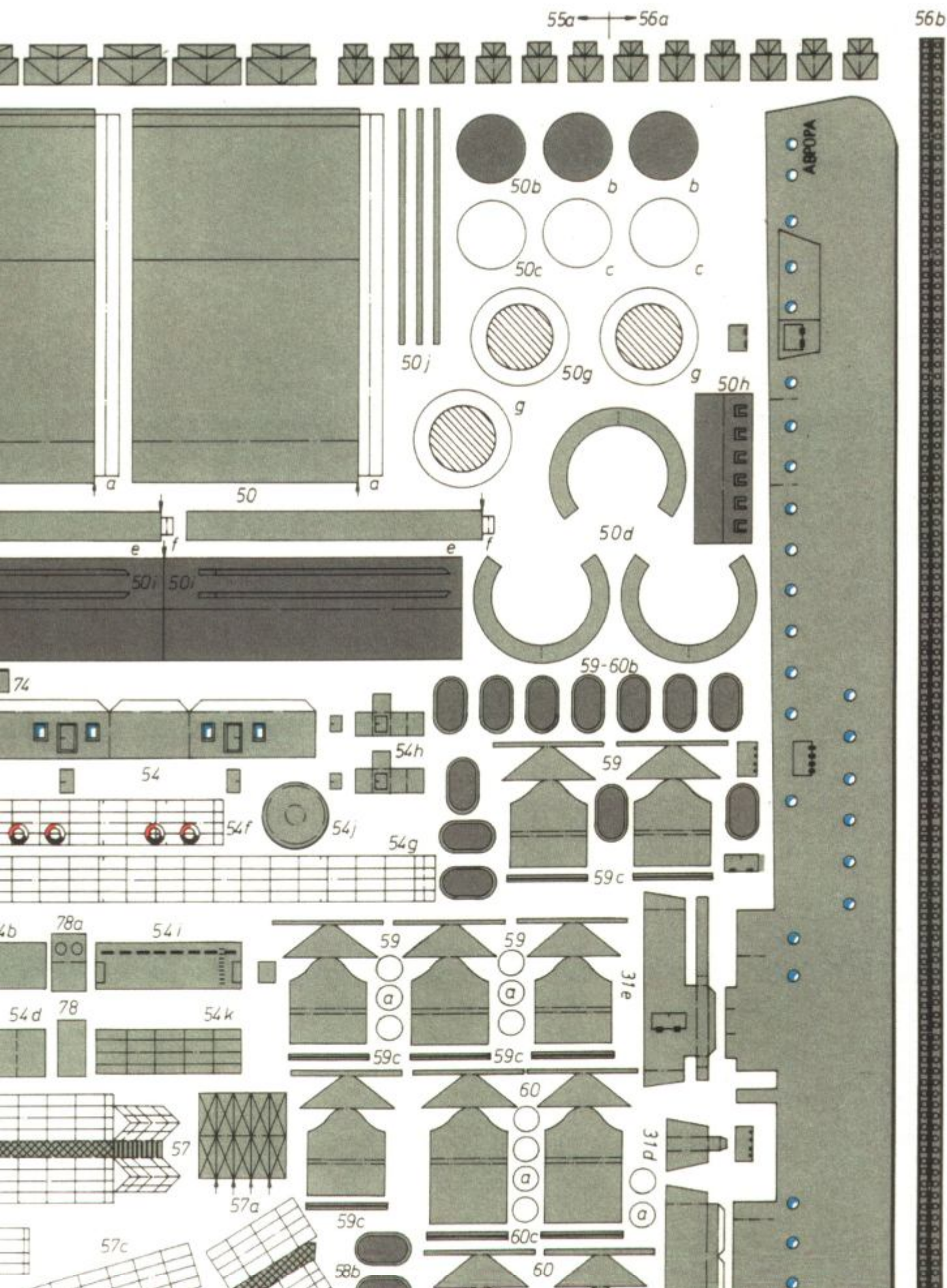
Best.Nr. 1252

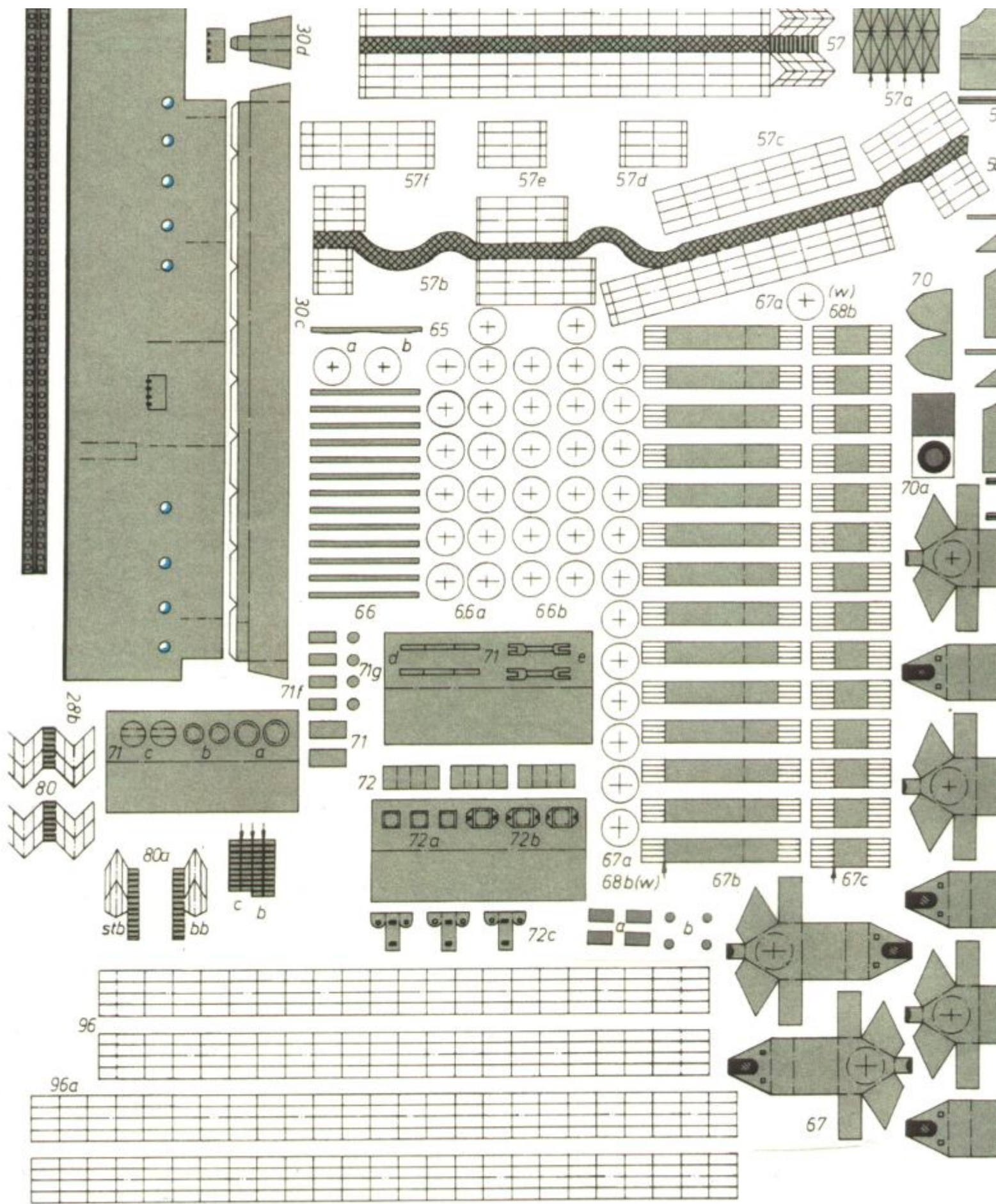


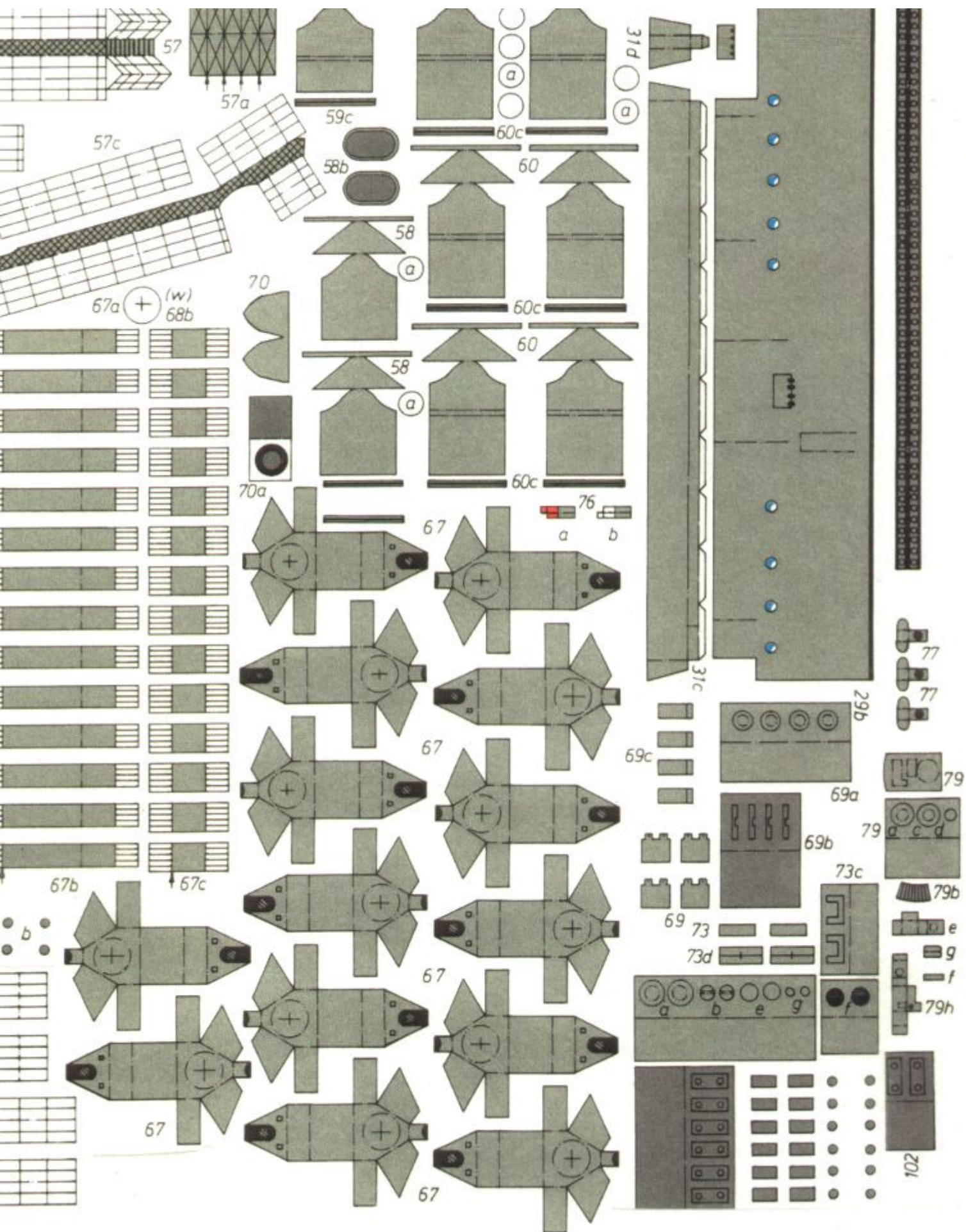
Printed in Germany

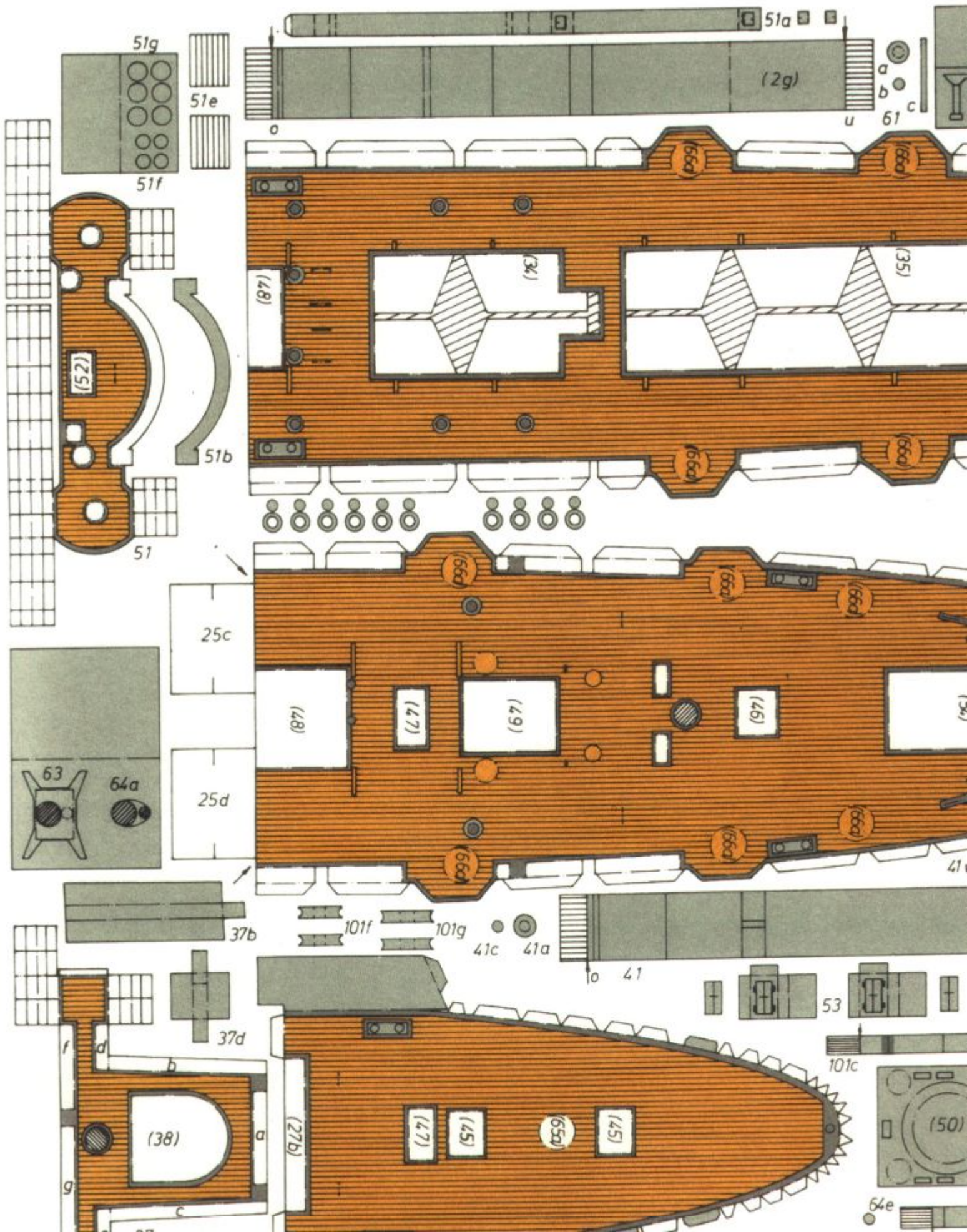
Imprimé en Allemagne

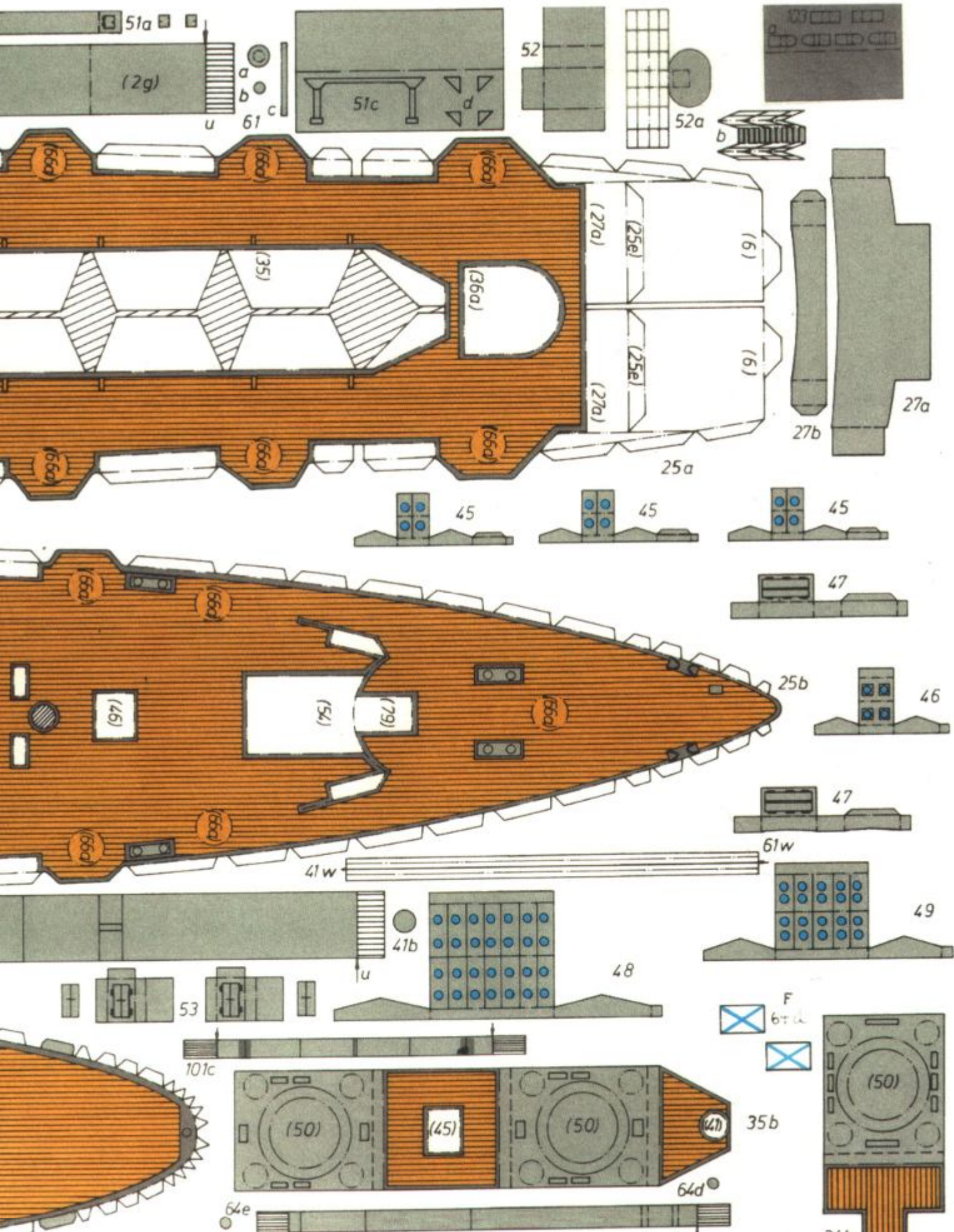


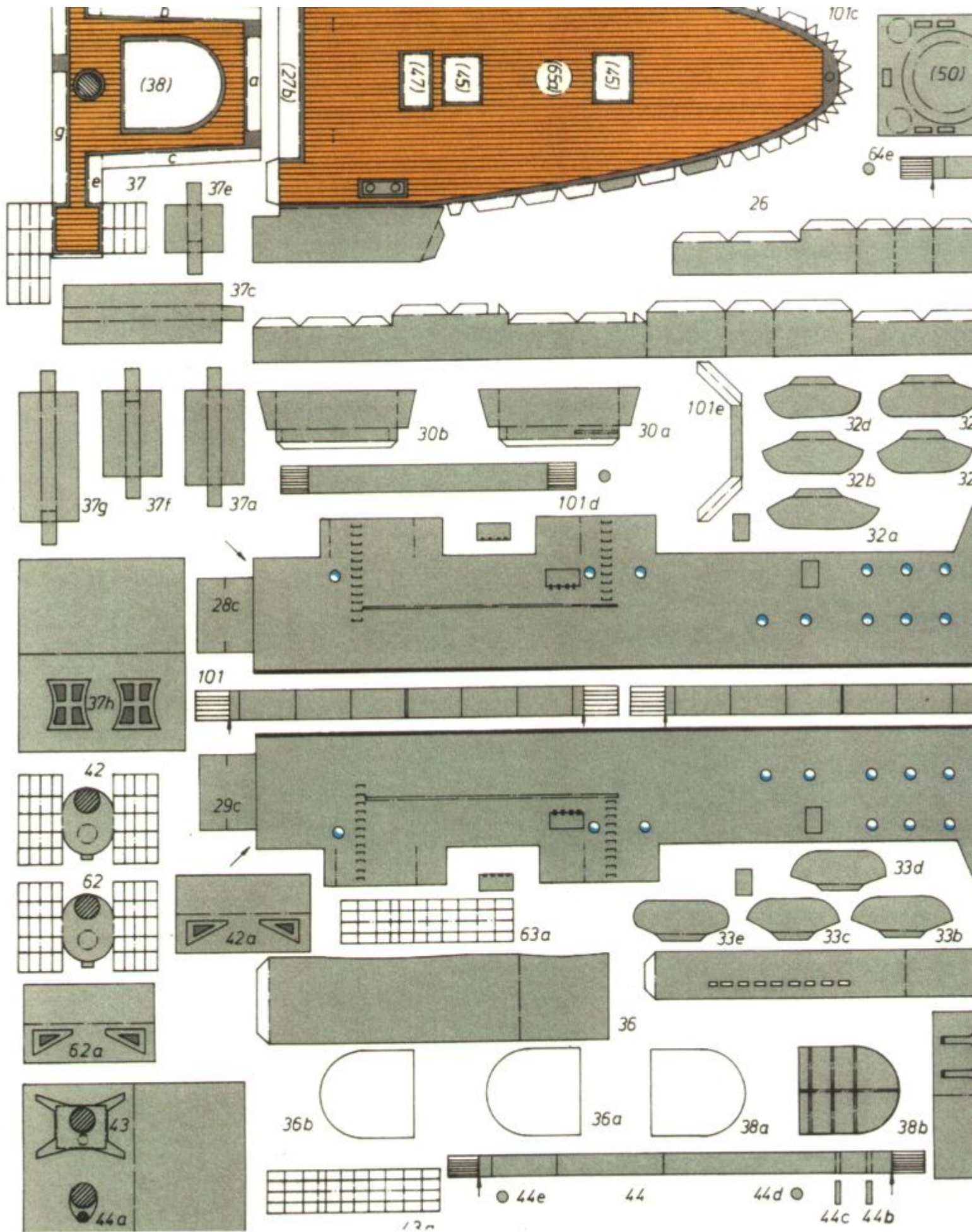


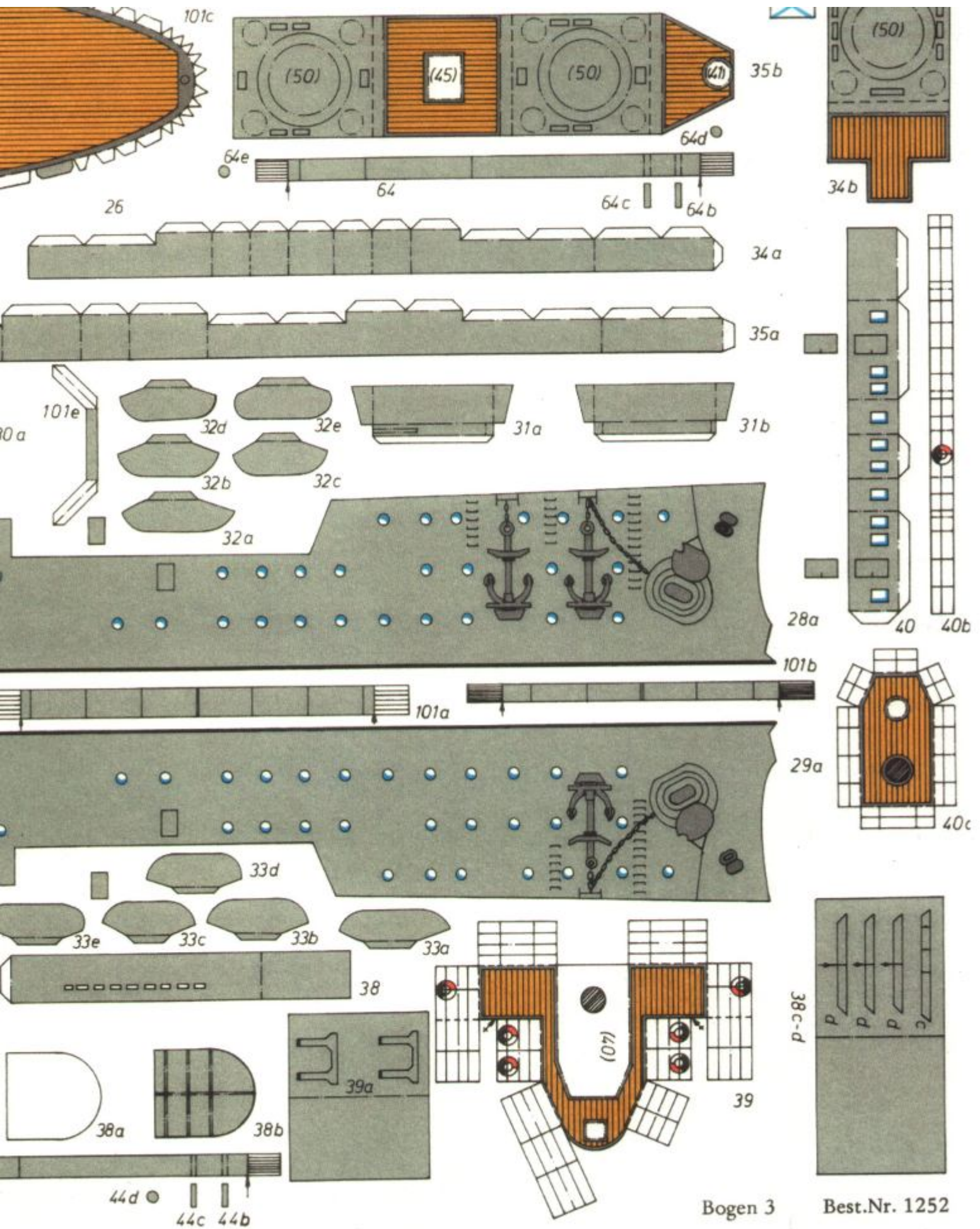






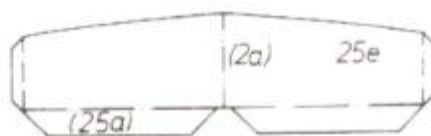
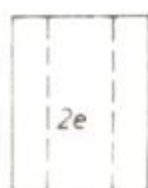
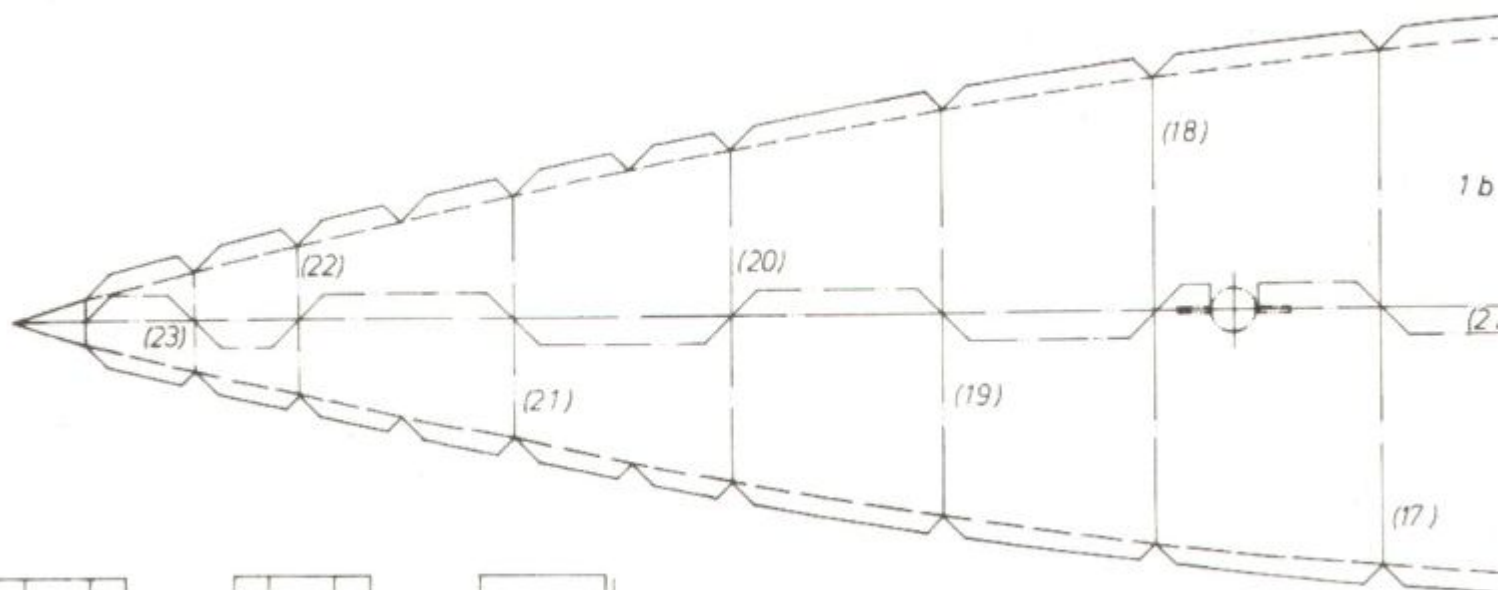
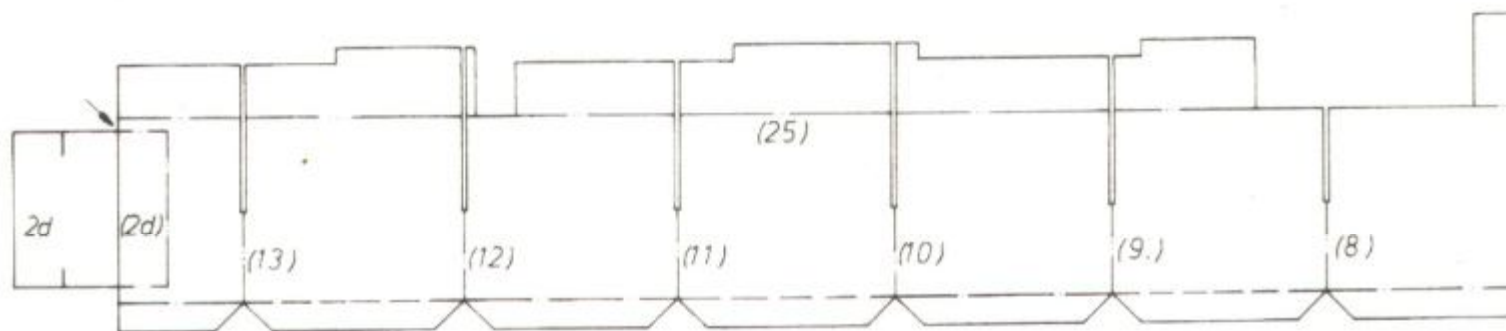
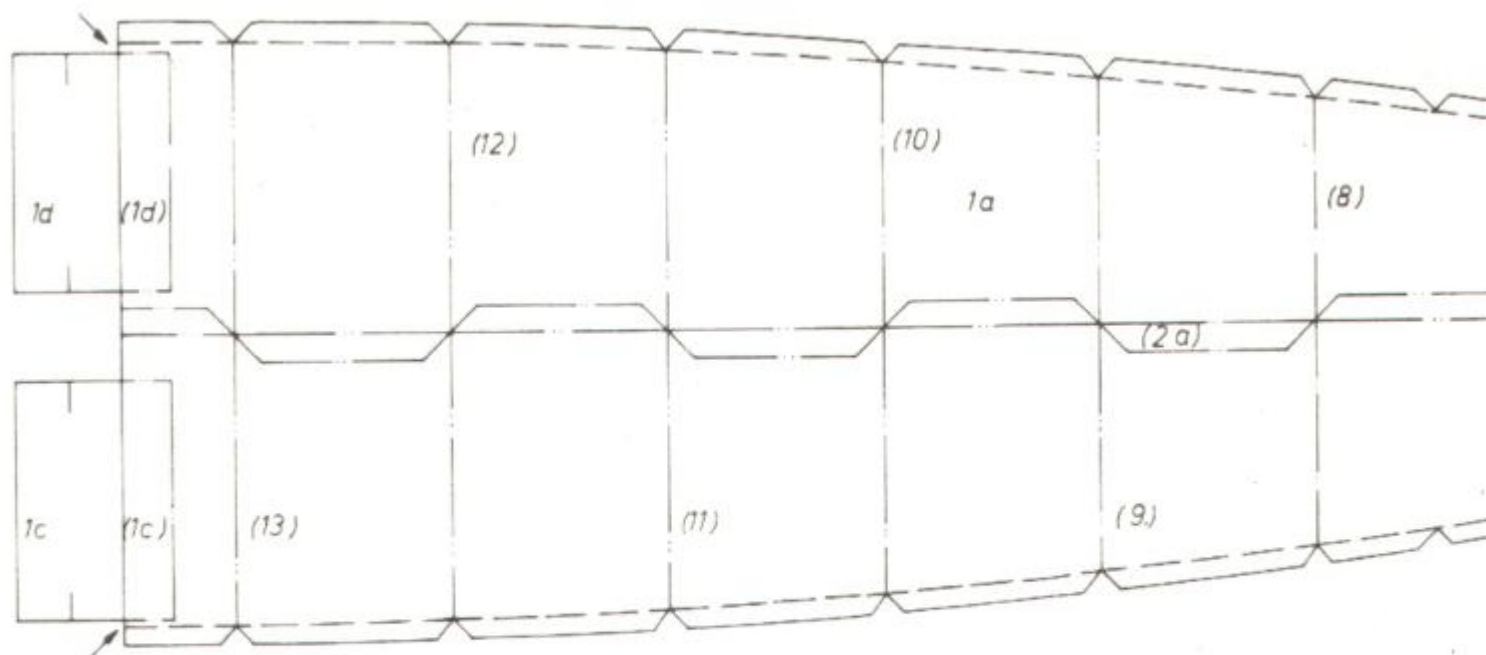


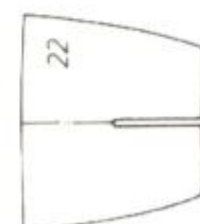
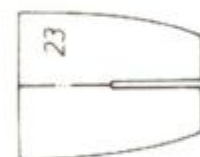
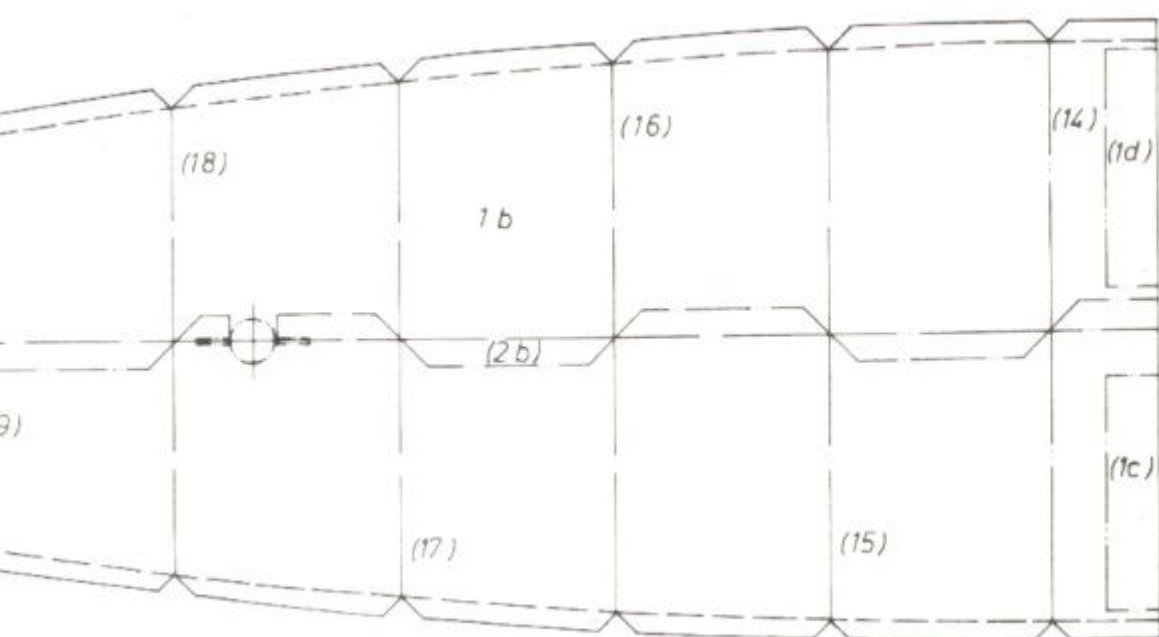
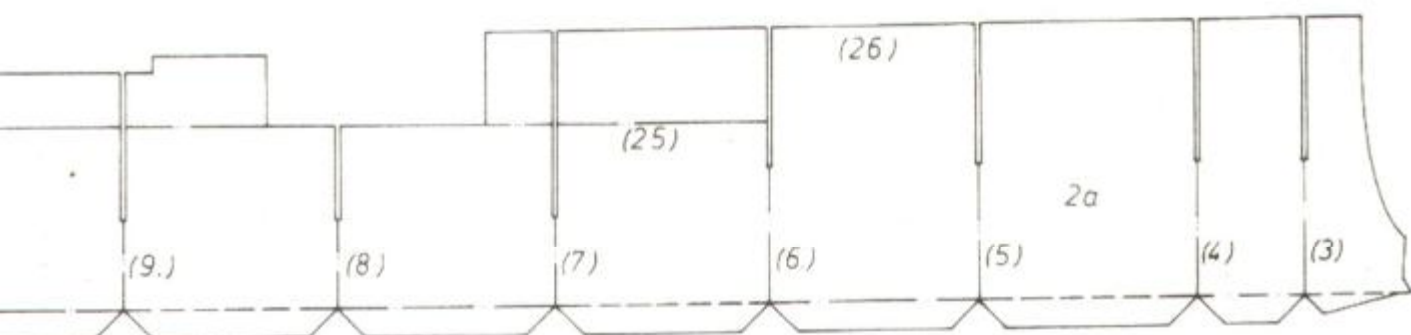
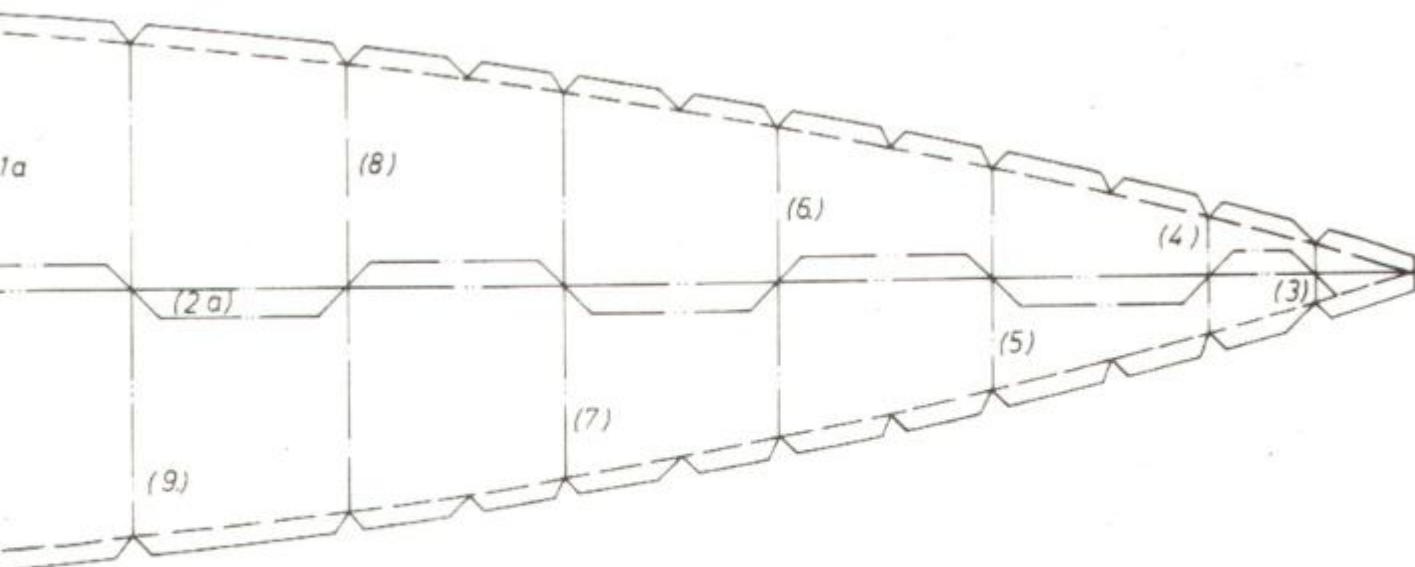


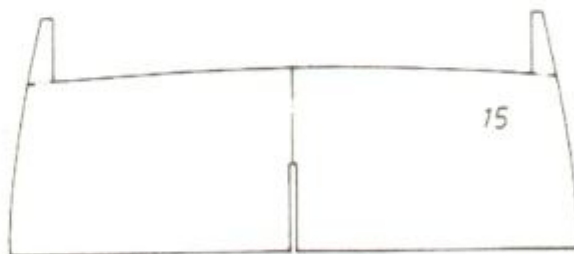
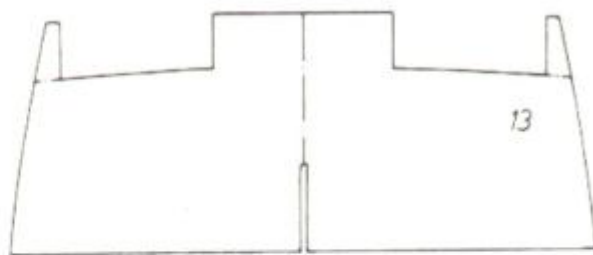
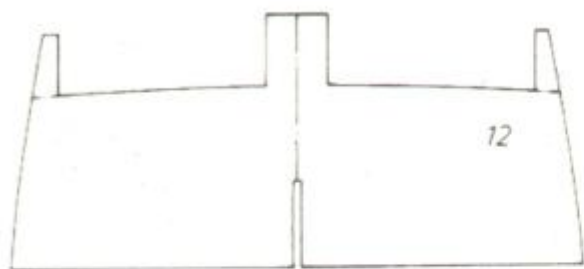
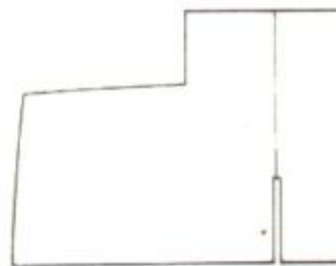
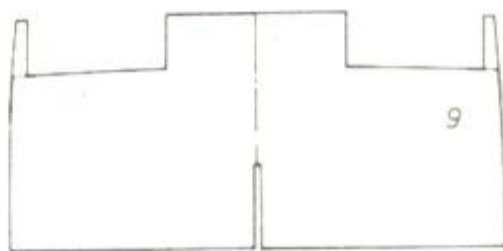
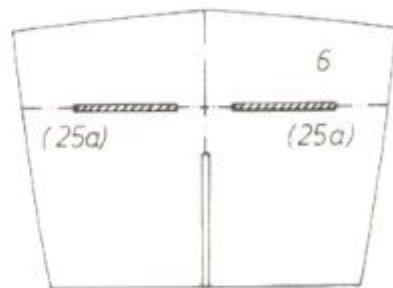
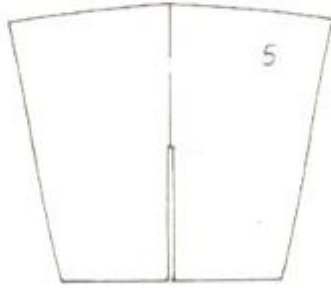
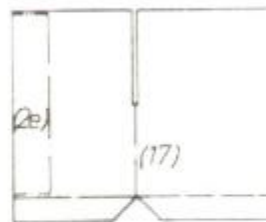
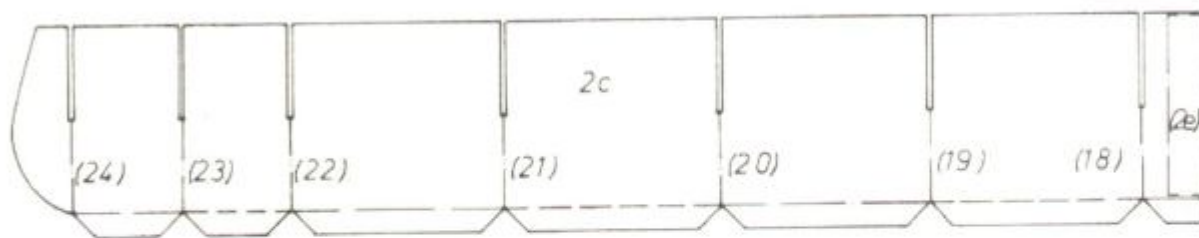
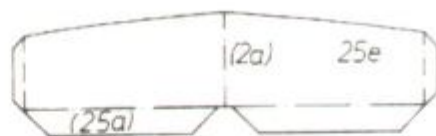
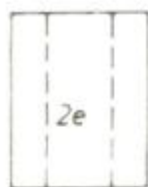


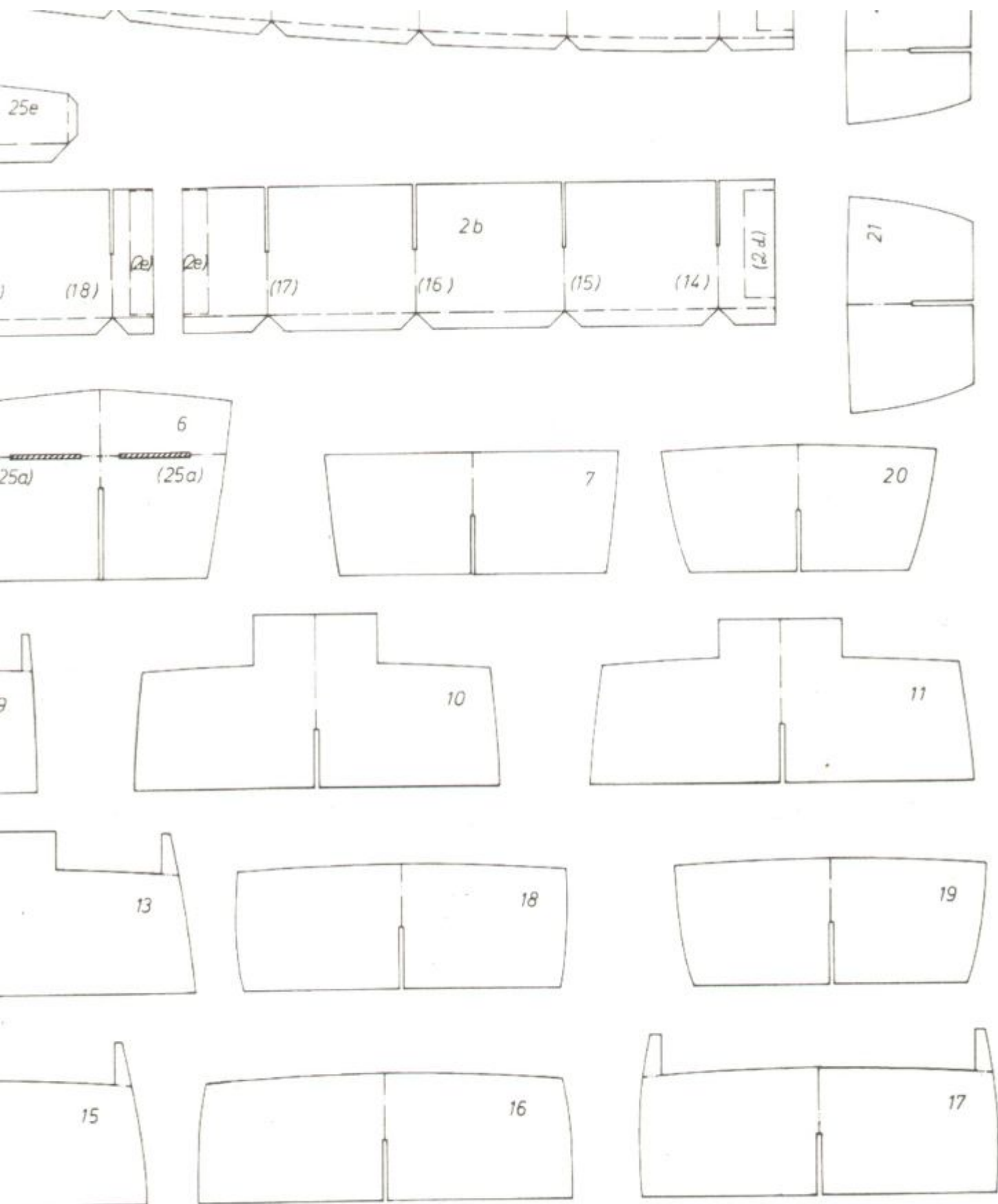
Bogen 3

Best.Nr. 1252









Teile 104 (Rettungsringe), Bogen 1

Teile 104 verdoppeln und auf den Markierungen der Relings aufkleben.

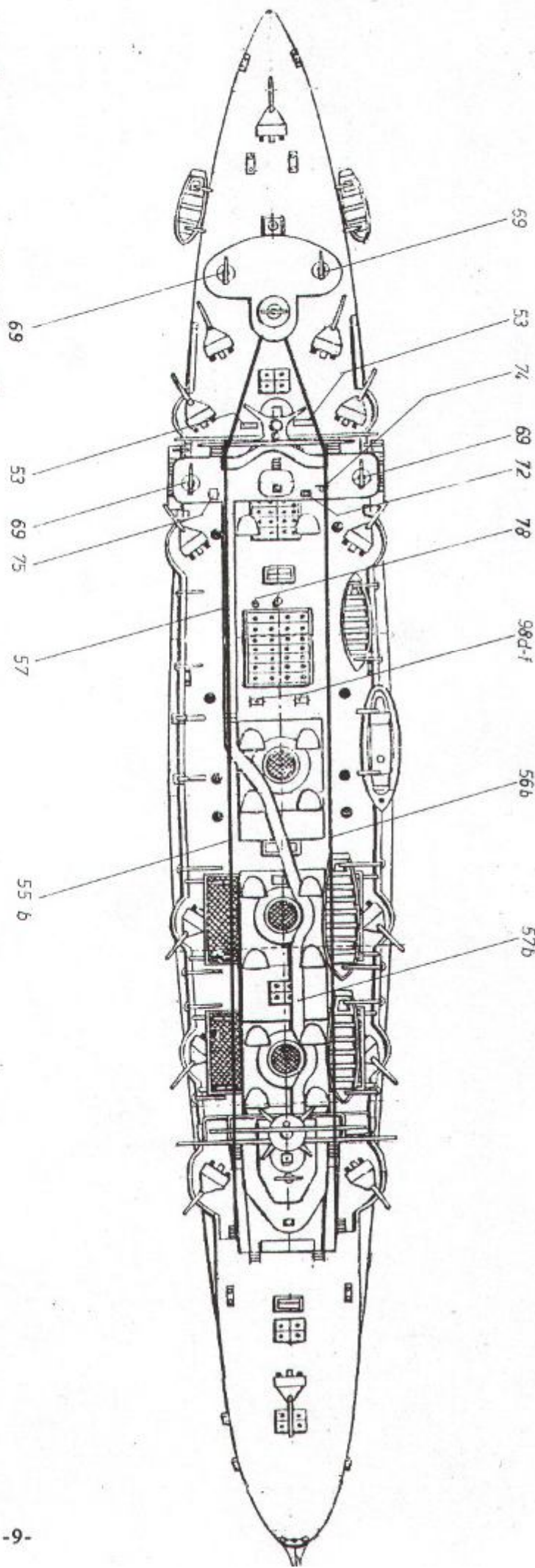
Teile 105 (2 Fallreepkräne), Bogen 1

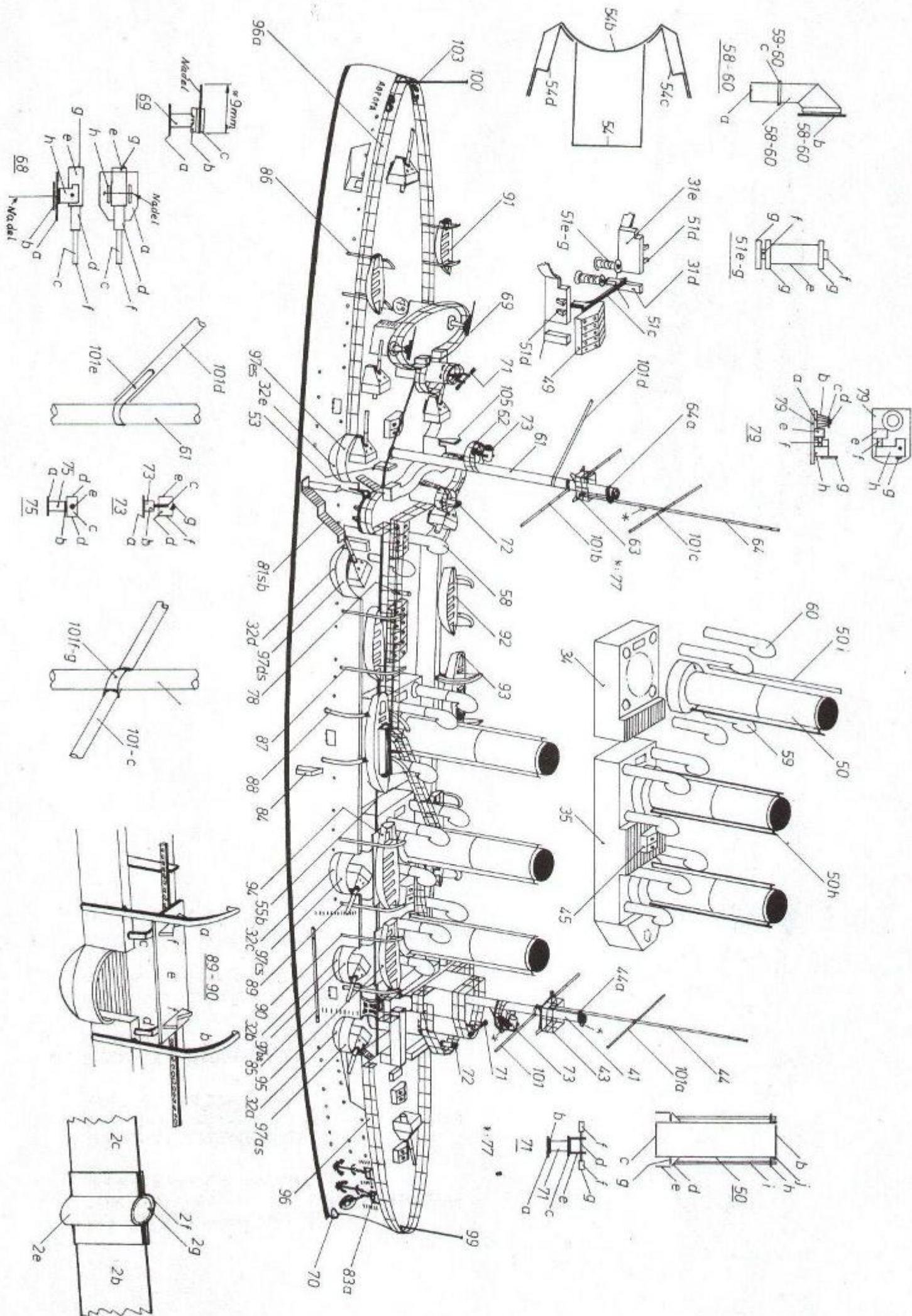
Teile 105 verdoppeln. Anbringung an Bordwand 28b und 29b unterhalb 51.

Flagge 64 d Nationalflagge

Flaggenteile F 64d (blaues Diagonal auf weißem Feld) ausschneiden, rückseitig zusammenkleben und am Heckflaggstock (Teil 100) oder an Großstenge (Teil 64) befestigen.

Zum Schluß weiß erscheinende Schnittkanten vorsichtig nachfärben.





Maßangaben für:

